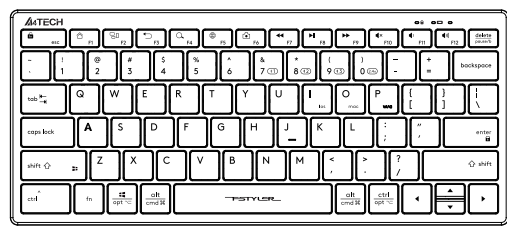


QUICK START GUIDE

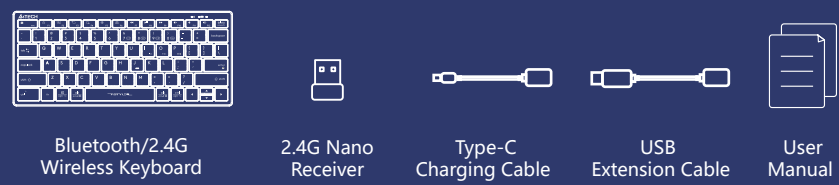


FBX51C

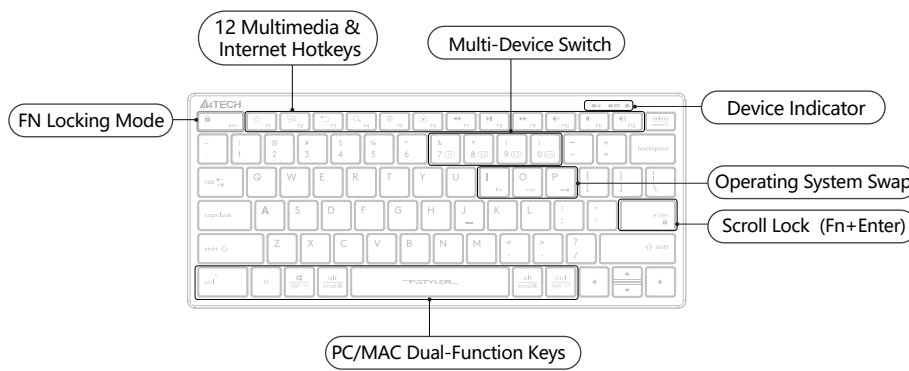
Bluetooth/2.4G

FSTYLER COLLECTION

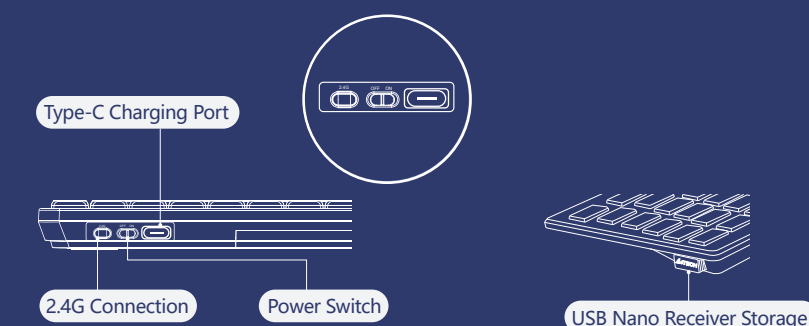
WHAT'S IN THE BOX



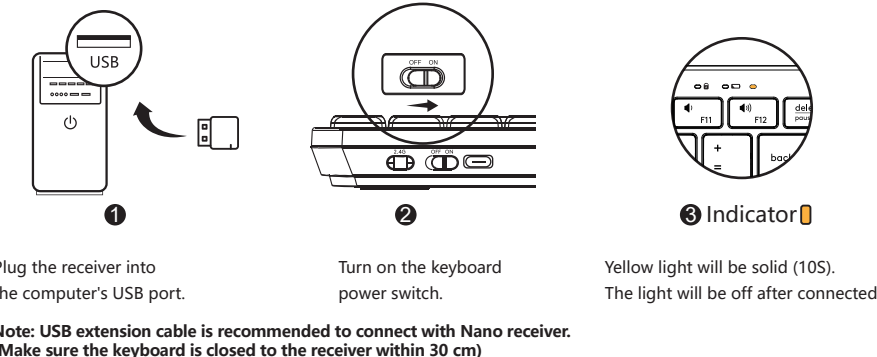
THE FRONT



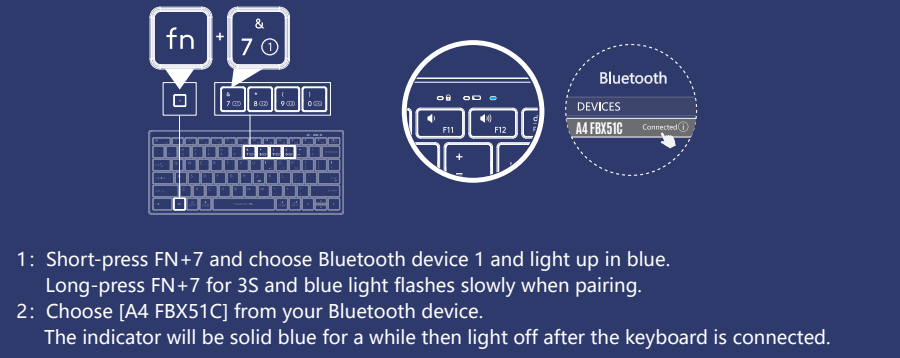
THE FLANK / BOTTOM



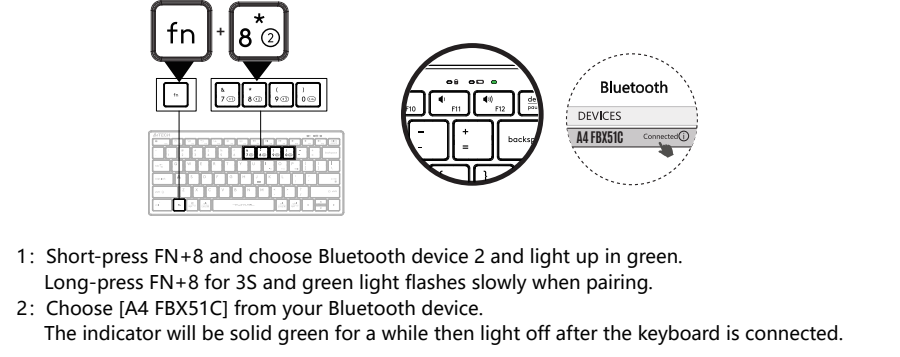
CONNECTING 2.4G DEVICE



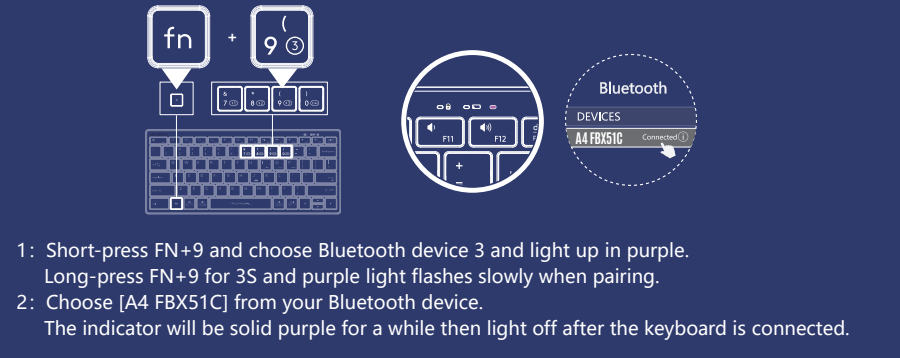
CONNECTING BLUETOOTH DEVICE 1 (For Mobile Phone/Tablet/Laptop)



CONNECTING BLUETOOTH DEVICE 2 (For Mobile Phone/Tablet/Laptop)



CONNECTING BLUETOOTH DEVICE 3 (For Mobile Phone/Tablet/Laptop)



OPERATING SYSTEM SWAP

Windows / Android is default system layout.

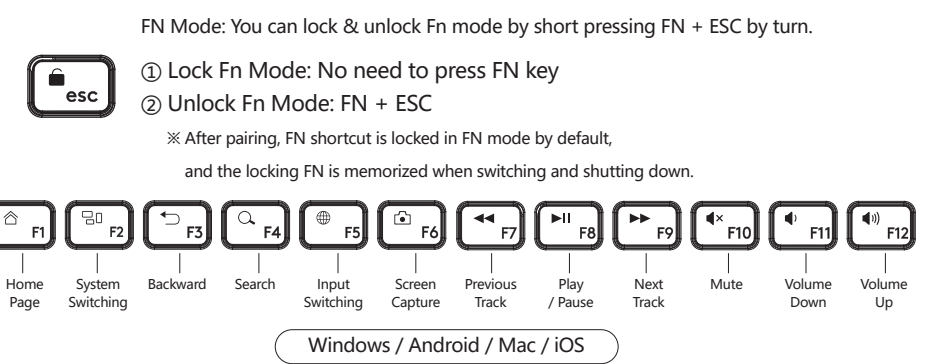
System	Shortcut [Long-Press for 3S]	Device / Layout Indicator
iOS	fn + [ios]	Light will be off after flashing.
Mac	fn + [mac]	
Windows, Chrome, Android & HarmonyOS	fn + [w/a]	

Note: The layout you used last time will be remembered. You can switch the layout by following the above step.

INDICATOR (For Mobile Phone/Tablet/Laptop)

Indicator	Yellow Light	Blue Light	Green Light	Purple Light
Multi-Device Switch	fn + [ESC]	fn + [F12]	fn + [F11]	fn + [F10]
Device Switch: Short-Press for 1S	Solid Light 10S		Solid Light 5S	
Pair Device: Long-Press for 3S	No Need to Pair		Pairing: Flashes Slowly Connected: Solid Light 10S	

FN MULTIMEDIA KEY COMBINATION SWITCH



OTHER FN SHORTCUTS SWITCH

Shortcuts	Windows	Android	Mac / iOS
fn + [delete]	Pause	Pause	Pause
fn + [up]	Device Screen Brightness +	Device Screen Brightness +	Device Screen Brightness +
fn + [down]	Device Screen Brightness -	Device Screen Brightness -	Device Screen Brightness -
fn + [backspace]		Screen Lock	Screen Lock (iOS Only)
fn + [enter]	Scroll Lock	Scroll Lock	

Note: The final function refer to the actual system.

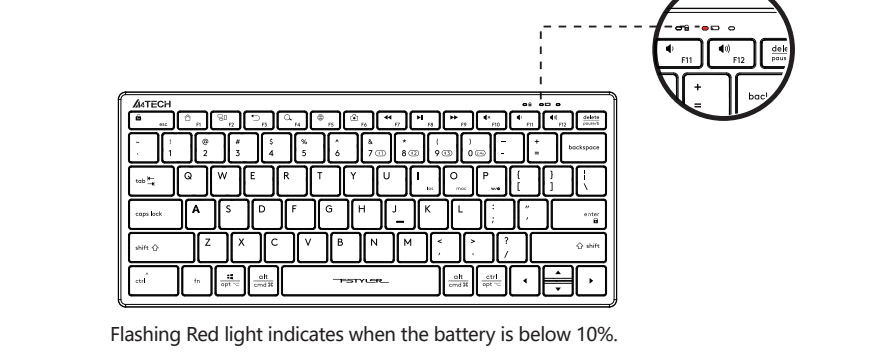
DUAL-FUNCTION KEY

Multi-System Layout

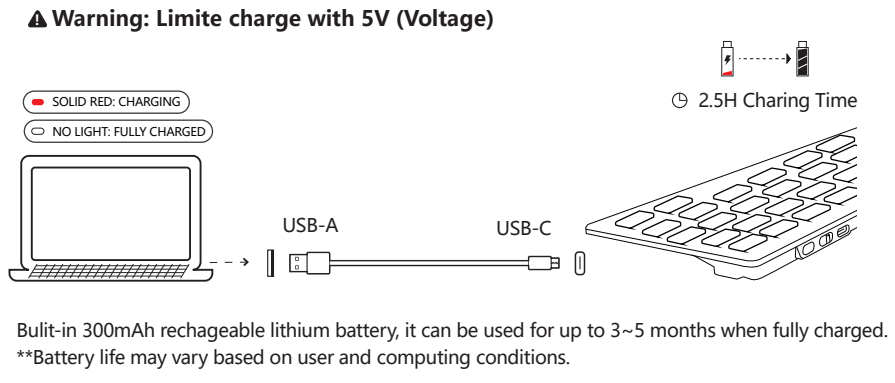
Keyboard Layout	Windows / Android (W / A)	iOS / Mac (ios / mac)
fn + [ctrl]	Ctrl	Control ^
fn + [opt]	Start	Option
fn + [cmd]	Alt	Command
fn + [md]	Alt (Right)	Command
fn + [ctrl]	Ctrl (Right)	Option

Switching Steps:
① Choose iOS layout by pressing FN+I.
② Choose MAC layout by pressing FN+O.
③ Choose Windows / Android layout by pressing FN+P.

LOW BATTERY INDICATOR



USB TYPE-C RECHARGEABLE



SPECIFICATIONS

Model: FBX51C
Connection: Bluetooth / 2.4G
Operating Range: 5~10 M
Multi-Device: 4 Devices (Bluetooth x 3, 2.4G x 1)
Layout: Windows | Android | Mac | iOS
Battery: 300mAh Lithium Battery
Receiver: Nano USB Receiver
Includes: Keyboard, Nano Receiver, USB Extension Cable, Type-C Charging Cable, User Manual
System Requirements: Windows / Mac / iOS / Chrome / Android / Harmony OS...

Q & A

- Question** How to switch layout under different system?
Answer You can switch layout by pressing FN + I / O / P under Windows | Android | Mac | iOS.
- Question** Does the layout can be remembered?
Answer The layout you used last time will be remembered.
- Question** How many devices can be connected?
Answer Interchange and connect up to 4 devices at the same time.
- Question** Does the keyboard remember the connected device?
Answer The device you connected last time will be remembered.
- Question** How can I know the current device is connected or not?
Answer When you turn on your device, the device indicator will be solid. (disconnected: 5S, connected: 10S)
- Question** How to switch between connected Bluetooth device 1-3?
Answer By pressing FN + Bluetooth shortcut (7 - 9).

WARNING STATEMENT

- The following actions may/will cause damages to the product.
- To disassemble, bump, crush, or throw into the fire, you may cause irrefutable damages in event of the lithium battery leakage.
 - Do not expose under the strong sunlight.
 - Please obey all local laws when discarding the batteries, if possible please recycle them. Do not dispose of it as household garbage, it may cause a fire or an explosion.
 - Please try to avoid charging in the environment below 0°C.
 - Do not remove or replace the battery.
 - Please use the charging cable included in the package to charge the product.
 - Do not use any equipment with voltage exceeding 5V for charging.

EST. 1987
A4TECH

FSTYLER
COLLECTION



www.a4tech.com



Scan for E-Manual