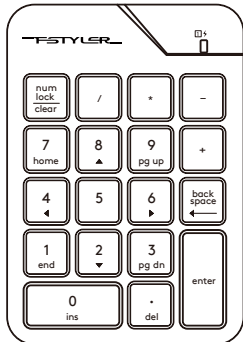


**QUICK
START
GUIDE**



FSTYLER
COLLECTION

WHAT'S IN THE BOX



2.4G Numeric Keypad



Nano USB Receiver



USB Type-C Adaptor



USB Type-C Charging Cable

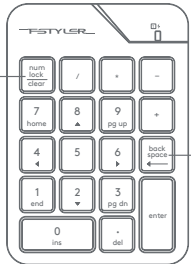


User Manual

KNOW YOUR NUMERIC KEYPAD

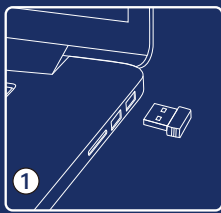
Dual Modes Num Lock

- 1 Synchronous (Default)
- 2 Asynchronous (Press NumLock Key for 3s)



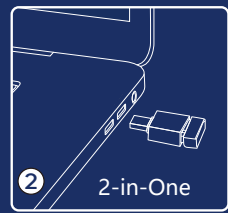
Backspace

CONNECTING 2.4G DEVICE

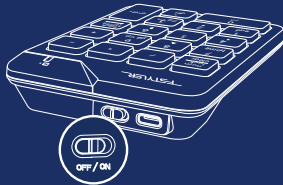


1

- 1 Plug the receiver into the computer USB port.
- 2 Use the Type-C adaptor to connect the receiver with the computer's Type-C port.



2-in-One



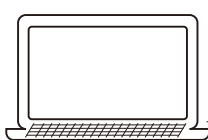
2

- Turn the numeric keypad's power switch to on.

CHARGING & INDICATOR

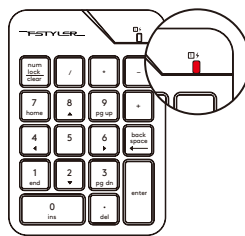


- SOLID RED: CHARGING
- NO LIGHT: FULLY CHARGED



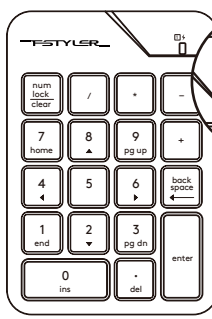
USB-A

USB-C



2H Charing Time

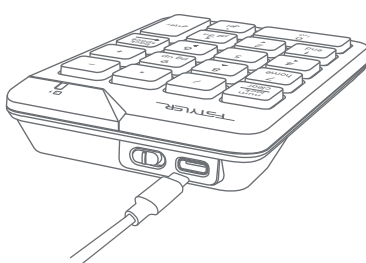
LOW BATTERY INDICATOR



Indicator

Flashing Red light indicates when the battery is below 25%.

TYPE-C RECHARGEABLE



Built-in Lithium Battery

TECH SPEC



Connection: 2.4G Hz	Keycap: Low-Profile
Operation Range: 10~15 m	Keys No.: 18
Report Rate: 125 Hz	Character: Laser Engraving
Charging Cable: 60 cm	Size: 87 x 124 x 24 mm
System: Windows 7/8/8.1/10/11	Weight: 88 g (w/ battery)

WARNING STATEMENT



The following actions may/will cause damages to the product.

- 1. To disassemble, bump, crush, or throwing into fire, you may cause irrefutable damages in event of the lithium battery leakage.
- 2. Do not expose under the strong sunlight.
- 3. Please obey all local laws when discarding the batteries, if possible please recycle it. Do not dispose it as household garbage, it may cause a fire or an explosion.
- 4. Please try to avoid charging in the environment below 0°C.
- 5. Do not remove or replace the battery.
- 6. Forbidden to use 6V to 24V charger, otherwise the product will be burned. Recommended to use a 5V charger for charging.



www.a4tech.com



Scan for E-Manual