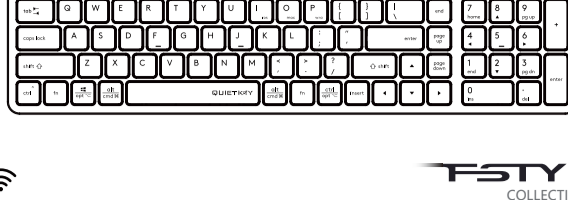


**QUICK START GUIDE**



**WHAT'S IN THE BOX**



**THE FRONT**

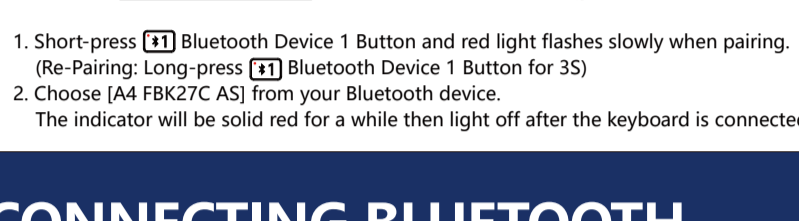


- 1 FN Locking Mode
- 2 12 Multimedia & Internet Hotkeys
- 3 Multi-Device Switch
- 4 One-Touch 8 Hotkeys
- 5 Operating System Swap
- 6 PC/MAC Dual-Function Keys

**THE FLANK / BOTTOM**

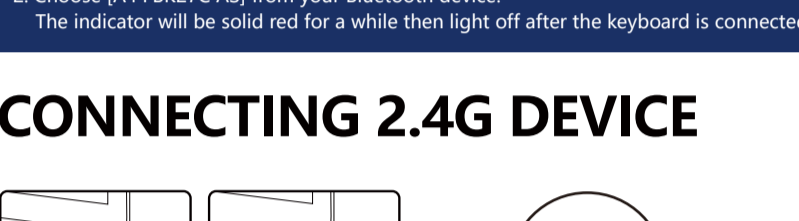


**CONNECTING BLUETOOTH DEVICE 1 (For Mobile Phone/Tablet/Laptop)**



1. Short-press [BT1] Bluetooth Device 1 Button and red light flashes slowly when pairing. (Re-Pairing: Long-press [BT1] Bluetooth Device 1 Button for 3S)
2. Choose [A4 FBK27C AS] from your Bluetooth device. The indicator will be solid red for a while then light off after the keyboard is connected.

**CONNECTING BLUETOOTH DEVICE 2 (For Mobile Phone/Tablet/Laptop)**



1. Short-press [BT2] Bluetooth Device 2 Button and red light flashes slowly when pairing. (Re-Pairing: Long-press [BT2] Bluetooth Device 2 Button for 3S)
2. Choose [A4 FBK27C AS] from your Bluetooth device. The indicator will be solid red for a while then light off after the keyboard is connected.

**CONNECTING 2.4G DEVICE**



- 1 Plug the receiver into the computer's USB port.
- 2 Turn on the keyboard power switch. Short-press 2.4G button, the indicator will be solid red for a while then light off after the keyboard is connected.

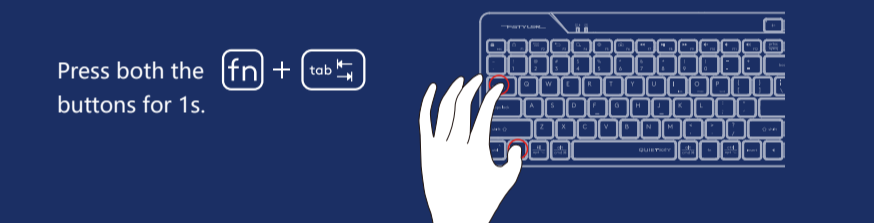
**OPERATING SYSTEM SWAP**

Windows / Android is default system layout.

System	Shortcut [Long-Press for 3S]	Device / Layout Indicator
iOS	[fn] + [ios]	Light will be off after flashing.
Mac	[fn] + [mac]	
Windows & Android	[fn] + [w/a]	

Note: The layout you used last time will be remembered. You can switch the layout by following the above step.

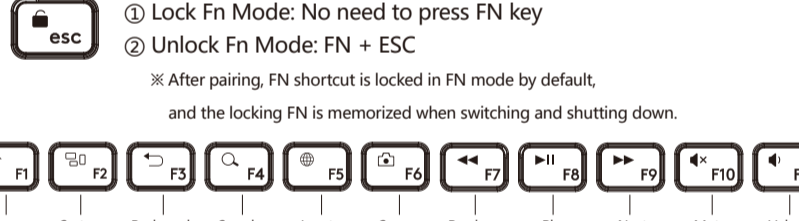
**INDICATOR (For Mobile Phone/Tablet/Laptop)**



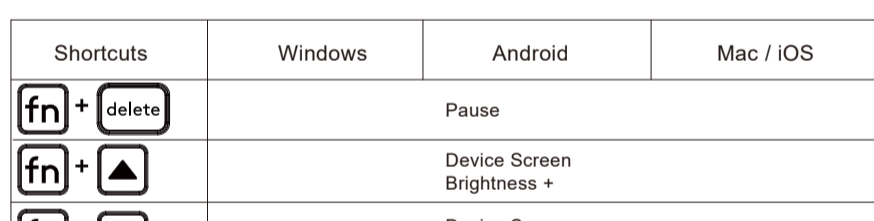
Indicator	Red Light	Red Light	Red Light
Multi-Device Switch	[2.4G]	[BT1]	[BT2]
Device Switch: Short-Press for 1S	Solid Light 5S		
First Pair: Short Press 1S Re-Pair: Long Press 3S	Solid Light 5S	Pairing: Flashes Slowly Connected: Solid Light 10S	

**ANTI-SLEEP SETTING MODE**

To prevent your PC from entering the sleep-mode setting while you are away from your desk, simply turn on our new Anti-Sleep Setting Mode for PC. It will automatically simulate the cursor movement once you turn it on. Now you may take an hour nap while downloading your favorite movie.



**ONE-TOUCH 8 HOTKEYS**

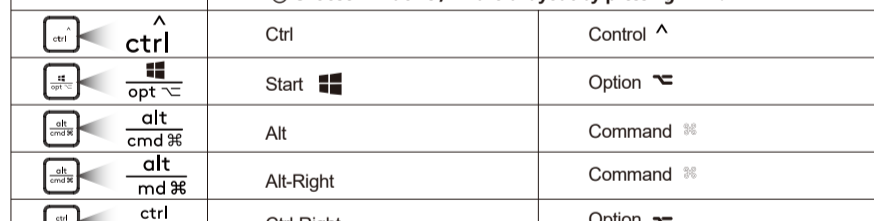


**FN MULTIMEDIA KEY COMBINATION SWITCH**

FN Mode: You can lock & unlock FN mode by short pressing FN + ESC by turn.

1 Lock FN Mode: No need to press FN key  
2 Unlock FN Mode: FN + ESC

※ After pairing, FN shortcut is locked in FN mode by default, and the locking FN is memorized when switching and shutting down.



**OTHER FN SHORTCUTS SWITCH**

Shortcuts	Windows	Android	Mac / iOS
[fn] + [delete]		Pause	
[fn] + [up]		Device Screen Brightness +	
[fn] + [down]		Device Screen Brightness -	
[fn] + [backspace]		Screen Lock	Screen Lock (iOS Only)

Note: The final function refer to the actual system.

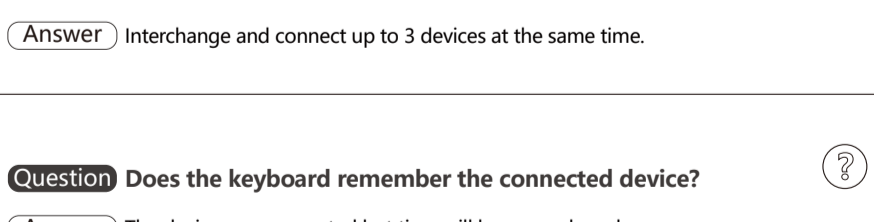
**DUAL-FUNCTION KEY Multi-System Layout**

Keyboard Layout	Windows / Android (W / A)	Mac / iOS (ios&mac)
[fn] + [ios] [mac] [w/a]	Switching Steps: 1 Choose iOS layout by pressing Fn+I 2 Choose MAC layout by pressing Fn+O 3 Choose Windows / Android layout by pressing Fn+P.	
[ctrl]	Ctrl	Control ^
[opt]	Start	Option
[alt]	Alt	Command
[alt]	Alt-Right	Command
[opt]	Ctrl-Right	Option

**CHARGING & INDICATOR**

Warning: Limite charge with 5V (Voltage)

SOLID RED: CHARGING  
NO LIGHT: FULLY CHARGED  
2.5H Charging Time



Flashing Red light indicates when the battery is below 10%.

**SPECIFICATIONS**

Connection: Bluetooth / 2.4Ghz  
Multi-Device: Bluetooth x 2, 2.4G x 1  
Operation Range: 5~10 m  
Report Rate: 125 Hz  
Character: Laser Engraving  
Includes: Keyboard, Nano Receiver, Type-C Adaptor, USB Extension Cable, Type-C Charging Cable, User Manual  
System Platform: Windows / Mac / iOS / Chrome / Android / Harmony OS...

**Q & A**

- Question** How to switch layout under different system?  
**Answer** You can switch layout by pressing Fn + I/O/P under Windows | Android | Mac | iOS.
- Question** Does the layout can be remembered?  
**Answer** The layout you used last time will be remembered.
- Question** How many devices can be connected?  
**Answer** Interchange and connect up to 3 devices at the same time.
- Question** Does the keyboard remember the connected device?  
**Answer** The device you connected last time will be remembered.
- Question** How can I know the current device is connected or not?  
**Answer** When you turn on your device, the device indicator will be solid. (disconnected: 5S, connected: 10S)
- Question** How to switch between connected Bluetooth device 1-2?  
**Answer** By pressing the Bluetooth individual buttons ( [BT1] [BT2] ) at the keyboard's top right corner.

**WARNING STATEMENT**

- The following actions may/will cause damages to the product.
1. To disassemble, bump, crush, or throw into the fire, you may cause irrefutable damages in event of the lithium battery leakage.
  2. Do not expose under the strong sunlight.
  3. Please obey all local laws when discarding the Batteries, if possible please recycle them. Do not dispose of it as household garbage, it may cause a fire or an explosion.
  4. Please try to avoid charging in the environment below 0°C.
  5. Do not remove or replace the battery.
  6. Please use the charging cable included in the package to charge the product.
  7. Do not use any equipment with voltage exceeding 5V for charging.