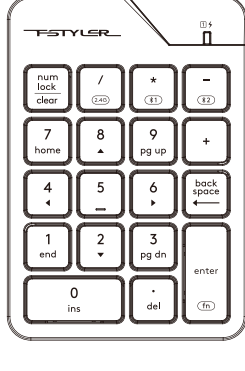
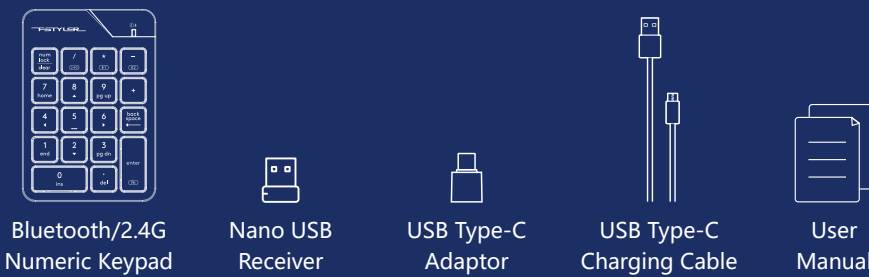


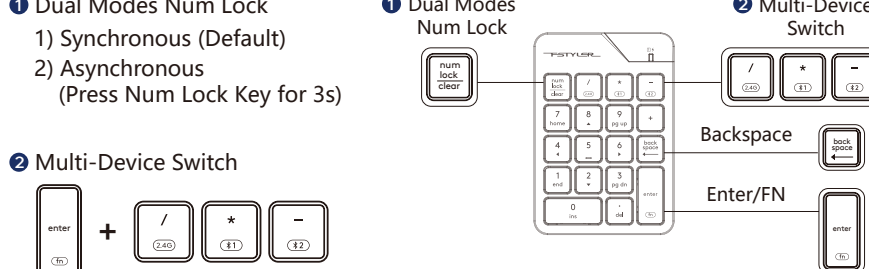
**QUICK START GUIDE**



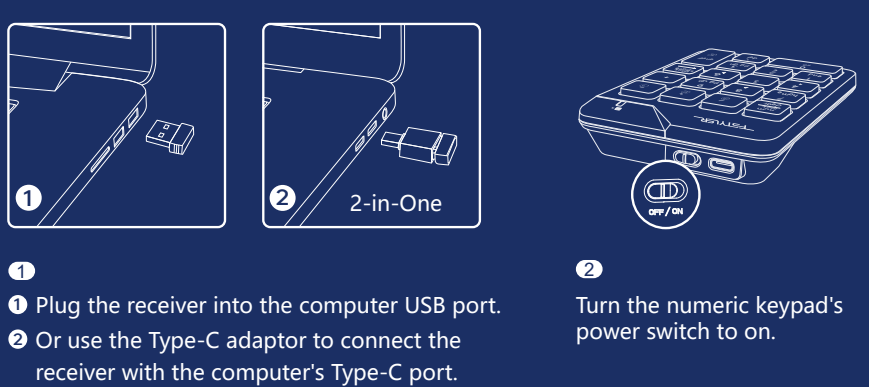
**WHAT'S IN THE BOX**



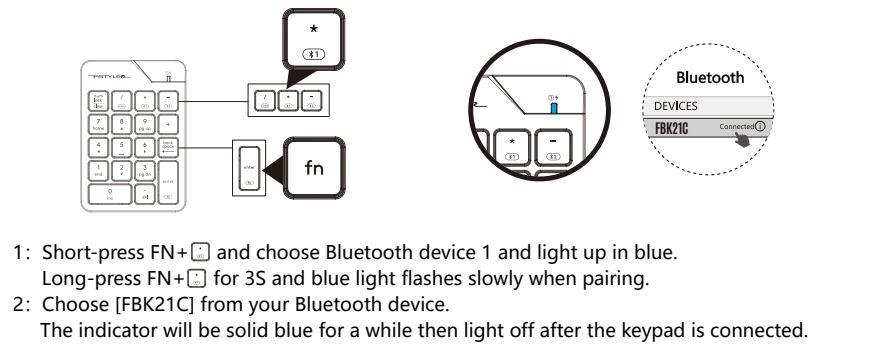
**KNOW YOUR KEYPAD**



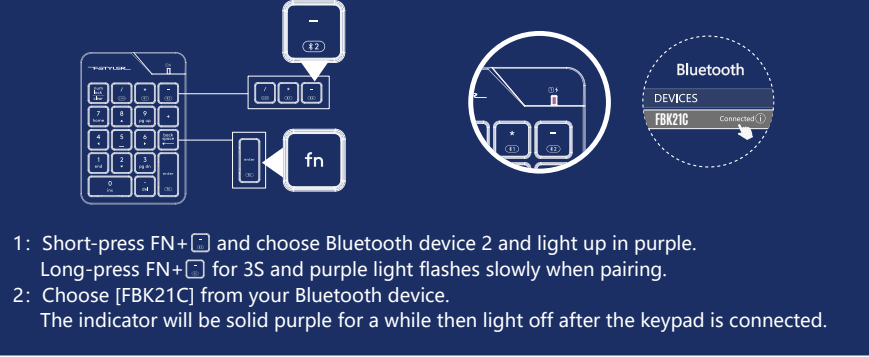
**CONNECTING 2.4G DEVICE**



**CONNECTING BLUETOOTH DEVICE 1 (For Mobile Phone/Tablet/Laptop)**



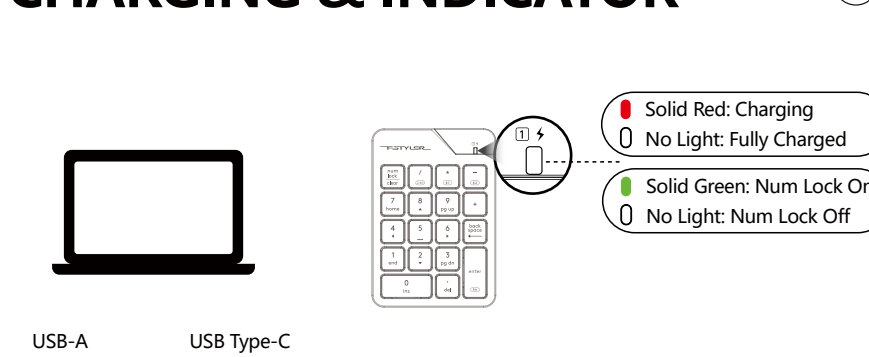
**CONNECTING BLUETOOTH DEVICE 2 (For Mobile Phone/Tablet/Laptop)**



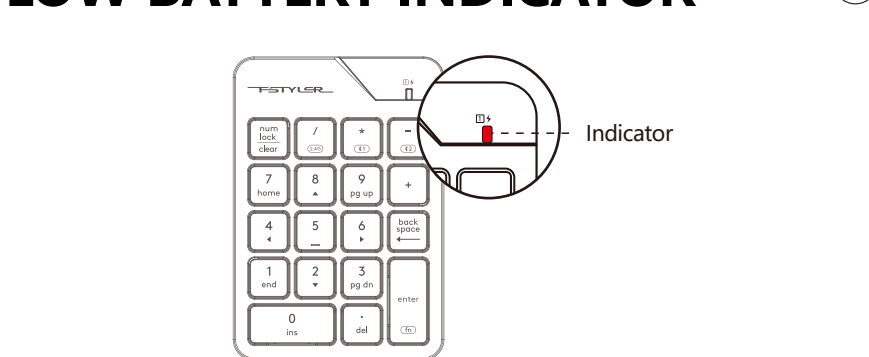
**INDICATOR (For Mobile Phone/Tablet/Laptop)**

Indicator	Yellow Light	Blue Light	Purple Light
Multi-Device Switch	fn + /	fn + *	fn + -
Device Switch: Short-Press for 1S	Solid Light 5S		
Pair Device: Long-Press for 3S	No Need to Pair	Pairing: Flashes Slowly Connected: Solid Light 10S	

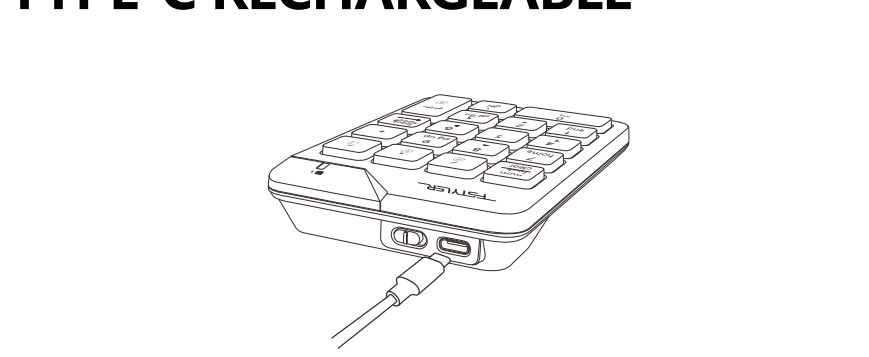
**CHARGING & INDICATOR**



**LOW BATTERY INDICATOR**



**TYPE-C RECHARGEABLE**



**TECH SPEC**

Connection: Bluetooth / 2.4G	Keys No.: 18
Operating Range: 5~10M	Character: Laser Engraving
Multi-Device: 3 Devices (Bluetoothx2, 2.4Gx1)	Battery: 200mAh Lithium Battery
Report Rate: 125 Hz	Size: 87 x 124 x 24 mm
Keycap: Low-Profile	Weight: 87g
	System: Windows 7/8/8.1/10/11*

\*The Bluetooth mode only supports Win 8 and above systems, you can use 2.4G mode to connect to the Win 7 system.

**Q & A**

- Question** How many devices can be connected?  
**Answer** Interchange and connect up to 3 devices at the same time.
- Question** Does the keypad remember the connected device?  
**Answer** The device you connected last time will be remembered.
- Question** How can I know the current device is connected or not?  
**Answer** When you turn on your device, the device indicator will be solid. (disconnected: 5S, connected: 10S)

**WARNING STATEMENT**

- The following actions may/will cause damages to the product.
- To disassemble, bump, crush, or throwing into fire, you may cause irrefutable damages in event of the lithium battery leakage.
  - Do not expose under the strong sunlight.
  - Please obey all local laws when discarding the batteries, if possible please recycle it. Do not dispose it as household garbage, it may cause a fire or an explosion. Please try to avoid charging in the environment below 0°C.
  - Do not remove or replace the battery.
  - Forbidden to use 6V to 24V charger, otherwise the product will be burned. Recommended to use a 5V charger for charging.