



User Manual

Multi-mode Software

www.a4tech.com

About "Multi-mode" software

You can define the function of each mouse button in 5 modes, such as Screen capture, TutorPen, LaserPointer, 16-in-One, etc.

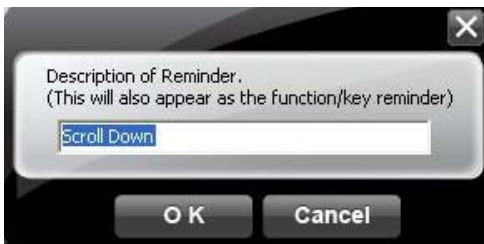
Define 5 modes


1. Open the "Main Menu" by double-click the icon  on your desktop

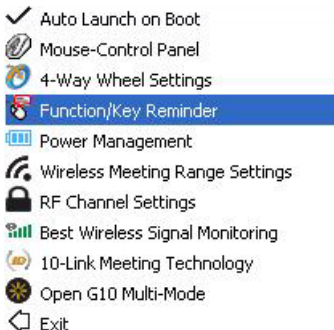


Main Menu

2. Select the function you preferred for each button from the pull-down function list.
3. Give a note for each button at the "Description of Reminder" fields.



4. Click  at the system tray and select "Function/Key Reminder" to set up the Reminder indication:
The function information will show at the system tray when pressing the mouse button.



5. Store and apply the setting by clicking "Apply".

How to shift / apply 5 modes

1. Easily shift 5 modes by pressing the “Mode-shift Button” and the Mode/Profile info will pop up shortly (as below figure).



2. Start to perform the chosen functions at your desired mode.

Capture screen


How to set: Select "Screen Capture" from the function list of the button **6**.

Usage:

1) Press/hold the mouse button **6** and drag the mouse cursor to the opposite corner and form a box around your object.



Edit Tool

2) Click  on “Edit Tool” and paste (Ctrl+V) it to any document or during online chatting. after editing your screenshot.
(Video capture is only supported on Vista or above)

Use the wireless mouse for your presentation

1. TutorPen

Press/hold the defined button to draw a line to remark the objects on your screen. You can eliminate the lines by double or triple click on the defined button. You may set the line width in the "TutorPen Setting".



2. LaserPointer

Press/hold the defined button to highlight the objects on your screen. (Note: The LaserPointer works even when the computer is power off, remember to switch off the mouse power on your journey)

****WARNING:** Do NOT have direct eye contact with the Laser Pointer as it can create serious and permanent damage to your eyes.

3. Open a file or a program

You may set up the defined buttons in association to the documents, programs or shortcuts required during your presentation. Just press the buttons to open them instantly.

4. Memo

Click the the “Memo” to open Memo screen as below shows, then all the current button settings will be listed out as the reminder. Then, you can check each button setting and activate them immediately.



Connect New Mice/KBs

The multi-link receiver can link to 5 sets Mice/KBs for specified applications, such as presentation, meeting or teaching. Please follow the steps to finish the ID pairing of the new mice/KBs.

1) Click the icon "🌟" at the system tray and select "10-Link Meeting Technology".

- ✓ Auto Launch on Boot
- 🖱 Mouse-Control Panel
- 🔗 4-Way Wheel Settings
- 🌟 Function/Key Reminder
- 🔋 Power Management
- 📶 Wireless Meeting Range Settings
- 📄 TutorPen Settings
- 🔒 RF Channel Settings
- 📶 Best Wireless Signal Monitoring
- 🌟 10-Link Meeting Technology
- 🌟 Open G10 Multi-Mode
- 👉 Exit

2) Follow the on-screen instructions to finish the ID pairing and manage the paired devices.

Gesture 16-in-1


Select "Gesture 16-in-1" from the pull-down function list, the setup box will pop up.

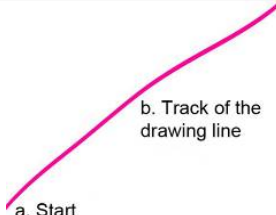

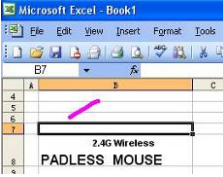
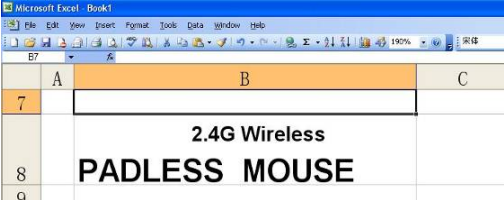


Setup Box


You may set up 16 user-friendly functions/commands to the defined gesture button **2** or **6**, including the functions of Keyboard/Mouse simulation, Open a file, Office, Text, Multimedia, Internet, etc.

Usage: Press/hold the gesture button **2** or **6** and draw a line in the direction described to perform the preset functions/commands.

Example: Using  as “Zoom In” by default, just press/hold the Gesture button **2** or **6** and draw a line as shown below, and then release the button, the picture or the document will be zoomed in immediately.

 <p>a. Start</p> <p>b. Track of the drawing line</p> <p>c. End</p>	<p>a. Press/hold the gesture button 2 or 6</p> <p>b. Draw the line as the  arrow direction</p> <p>c. Release gesture button 2 or 6</p> <p>Then the picture has been zoomed in.</p>
<p style="text-align: center;">Original</p>	<p style="text-align: center;">Zoom In</p>
	

Adjust wireless range

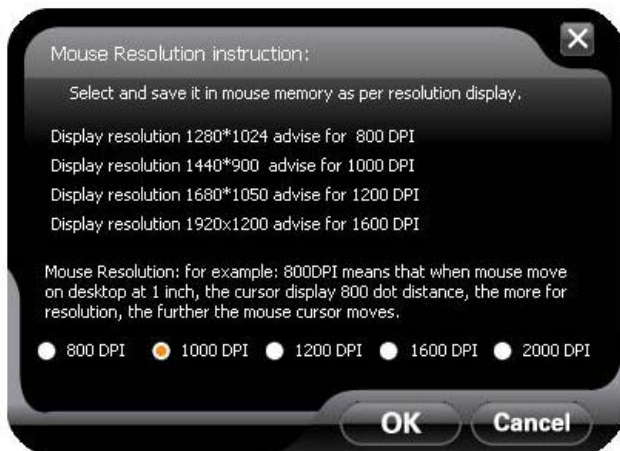
Click the icon  at the system tray and select "Wireless Meeting Range Settings".

- ✓ Auto Launch on Boot
-  Mouse-Control Panel
-  4-Way Wheel Settings
-  Function/Key Reminder
-  Power Management
-  **Wireless Meeting Range Settings**
-  RF Channel Settings
-  Best Wireless Signal Monitoring
-  10-Link Meeting Technology
-  Open G10 Multi-Mode
-  Exit



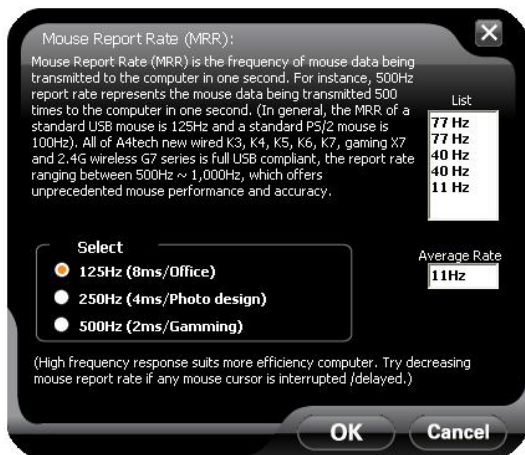
Adjust Mouse Sensitivity

Click and select "DPI Setting" from the pull-down function list of main menu to adjust mouse sensitivity among 100-2000 DPI depending on different display applications.



Adjust Mouse Report Rate

Click and select "Report Rate" from the pull-down function list of main menu to adjust mouse report rate.




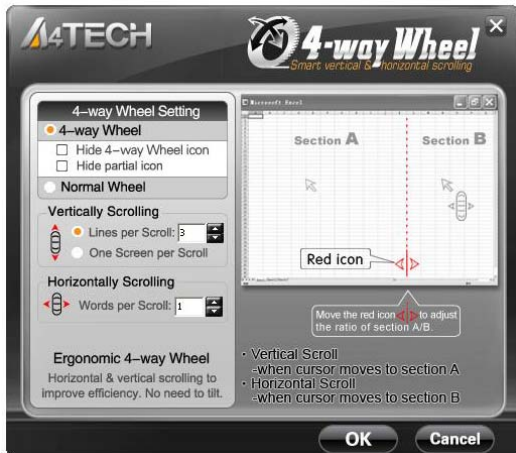
1X Speed: USB report rate is 125Hz, suitable for office and a general user, power consumption is the lowest.

2X Speed: USB report rate is 250Hz, suitable for CAD users, power consumption is normal.

4X Speed: USB report rate is 500Hz, suitable for heavy-duty game players, power consumption is high.

Change the Mouse Wheel to 4-way Wheel

Click the icon  at the system tray and select "4-way Wheel".



- 1) The 4-way Wheel splits the working screen into 2 areas A and B as shown on the right. When the cursor locates in area A, the wheel will perform vertical scrolling; when the cursor locates in area B, the wheel will perform horizontal scrolling
- 2) You may move the Red split icon to change the ratio of area A and B.

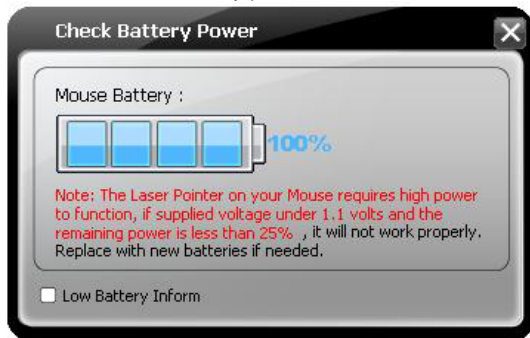
(Note: If the "Normal Wheel" is selected, the wheel will perform as a normal mouse wheel, and "4-way Wheel" function won't be launched.)

Power-saving Management

1. Click the icon  at the system tray and select "Power Management".



2. Click "Battery Indicator" to see the battery power status.



3. Low battery informs will pop up at the right corner of your screen when battery low.



Keyboard/Mouse Simulation:

You may setup mouse button to simulate a keyboard's keystroke or a key combination with "Win", "Ctrl", "Shift" and "Alt". Also you may setup mouse button to be one of "mouse left button, mouse right button, wheel up and wheel down".

Key Combination:

Quickly execute hotkey commands, such as: Cut, Copy, Paste, Delete, Search, Select All, Redo, Undo, New File, Open File, Save File, Print, etc.


Office Sets

Quickly execute other office commands, such as: "Zoom In, Zoom Out, Paste Text, Double Click and Triple click".

Internet & Multimedia:

Quickly execute Internet / multimedia commands, such as: Backward, Forward, Stop, Refresh, Search, My Favorite, Web Browser, E-mail, Media Player (Open), Previous, Next, Stop, Play/Pause, Mute, Volume+, Volume-, etc.

Additional tasks of Screen Capture Tool

Click the icon  at your system tray, the full task list of Screen Capture Tool will pop up as shown below:

- Auto Launch on Boot
-  Mouse-Control Panel
-  4-Way Wheel Settings
-  Function/Key Reminder
-  Power Management
-  Wireless Meeting Range Settings
-  TutorPen Settings
-  RF Channel Settings
-  Best Wireless Signal Monitoring
-  10-Link Meeting Technology
-  Open G10 Multi-Mode
-  Exit

Auto Launch on Boot

If this task is selected, Screen capture tool will auto-execute when the system boots up.


Mouse-Control Panel

Open "Mouse Properties" of your Windows system, e.g., you may setup mouse pointers and other often-used mouse settings.

Notice:


To ensure a good wireless connection, please read below instructions for your reference:

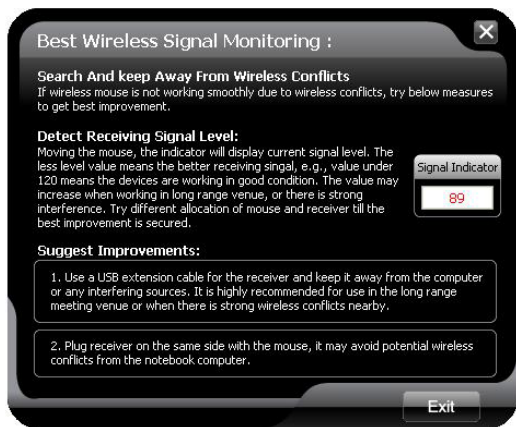
1. Avoid channel conflict from auto channel hopping

- 1) Click the icon  at the system tray and select "RF Channel Setting".
- 2) Select "Channel-lock" to define a private channel to secure better wireless connection quality.



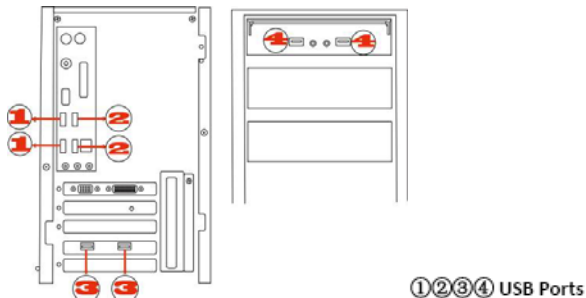
2. Avoid interference from iron panel of PC

Click the icon  at the system tray and select "Best Wireless Signal Monitoring".



If the wireless mouse is not working smoothly due to wireless conflicts, try below methods to get improvement.

- A) Please plug the Multi-link receiver into ③、④ to avoid shielding wireless signal instead of ①、②.



- B) Use USB extension cable to position the Multi-link receiver at a distance to prevent electromagnetic interference from devices.

Troubleshooting & FAQ

If the mouse is not working:

1. Make sure the mouse power is on
2. Try another USB port
3. Ensure the Multi-link receiver is inserted
4. Check battery and battery installation

Product Support

Need more technical support? Please go to: <http://support.a4tech.com/> and our support team will respond within 72 hours.

**Features and specifications of all A4TECH products are subject to change without notification.

